

# Wiri Depot

---



Earthworks for the stabling area and the main line connections are progressing well

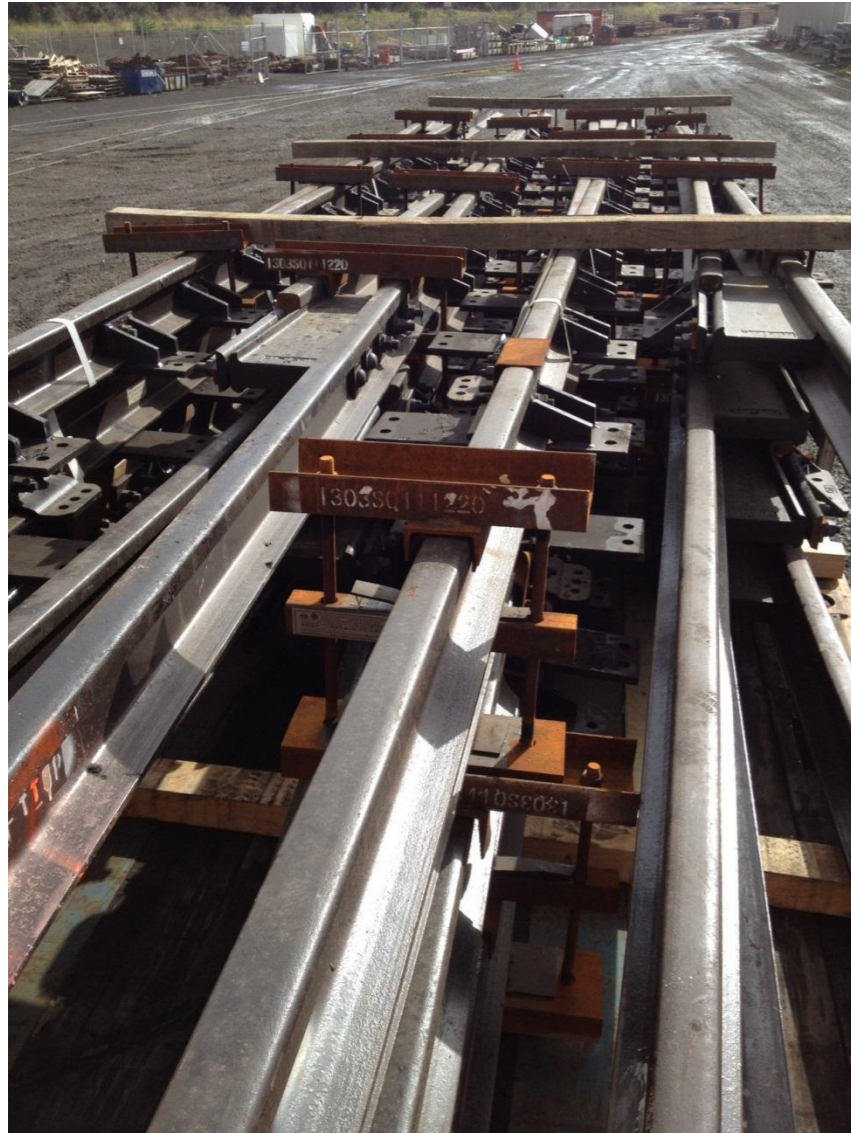
Bad weather has slowed progress a little but not of significance overall

# Wiri Depot

Construction of the pits for the wheel lathe and underfloor lifts has commenced



# Wiri Depot



6 kms of track delivered

Key Plant being integrated:

- Train Wash
- Depot Protection System
- Wheel Lathe
- Lifting jacks
- Turntable



# Electric Trains

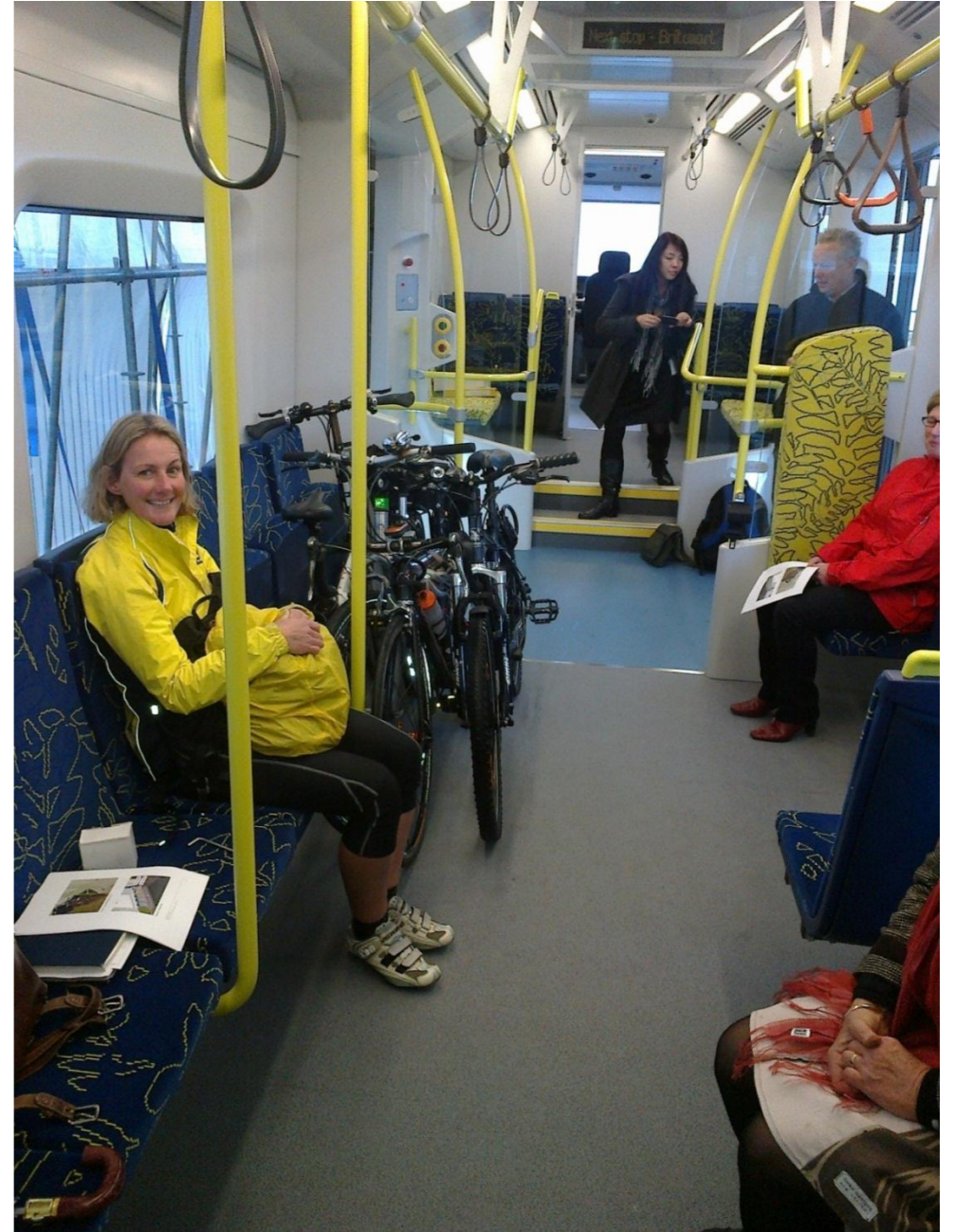
---



- Project is on programme and within budget
- The design of the vehicles is now completed in most areas
- Production of the first bogie and bodyshell parts are underway
- All systems, e.g. brakes, propulsion, air conditioning ordered
- Focus for the next three months is on:
  - Ensuring a high quality of manufacture through inspection, audit and significant presence in Spain
  - Completing the final areas of design, principally the detail of the control system functions
  - Agreeing the test and inspection specifications

# Mock Up 3 - Testing

- Extensive testing was carried out with stakeholders & user groups
- Driver testing and feedback sessions
- AT, AC, Veolia & KRG Staff Open Days



# Mock Up 3 - Accessibility Groups

Disability group sessions with:

- TAAG
- Barrier Free
- RNZFB

Generated valuable feedback and made a significant contribution to the final design solution



# Mock Up 3 - Changes

## Cab Design

- Raised the drivers seat
- Moved the driver console closer to seat
- Enlarged the knee space
- Regrouped some of the controls
- Lengthened the external handrails



# Mock Up 3 - Changes

---

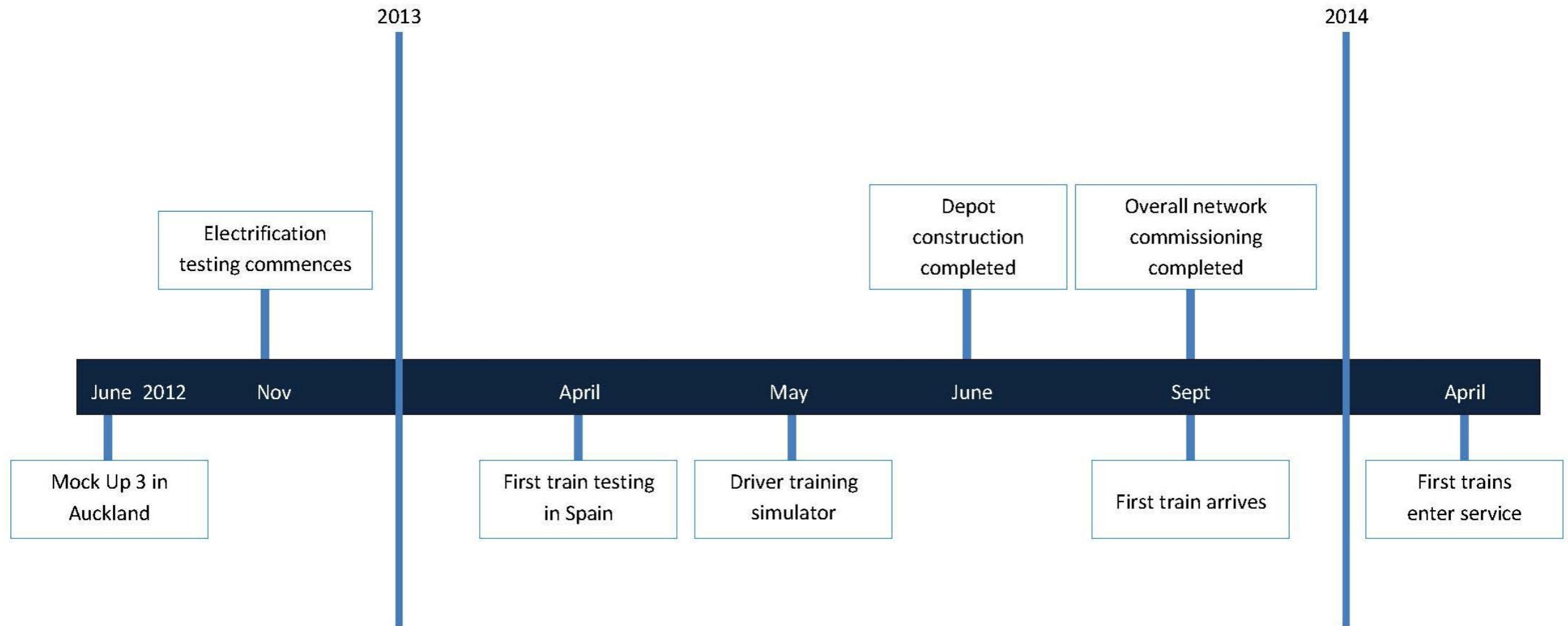


## Saloon Design

- Reduced size of draughtscreen to improve passenger flow towards and away from the vestibule
- Change seat orientation in low floor area
- Raised handrails
- Selected a preferred strap hanger
- Improved seat comfort
- Improved cycle storage



# Project Look Ahead



Note: Indicative Timeline